

Avenue

途徑

文字：Join 空間設計：近境制作



Design: Chung-Han, Tang 設計：唐忠漢

Category: House 形式：住宅

Material: Veneer / Iron piece / Stone / Baking varnish 材料：木皮 / 鐵件 / 石材 / 烤漆

Area: 160 m² 面積：48.5 坪

Project Year: May, 2016 時間：2016.05



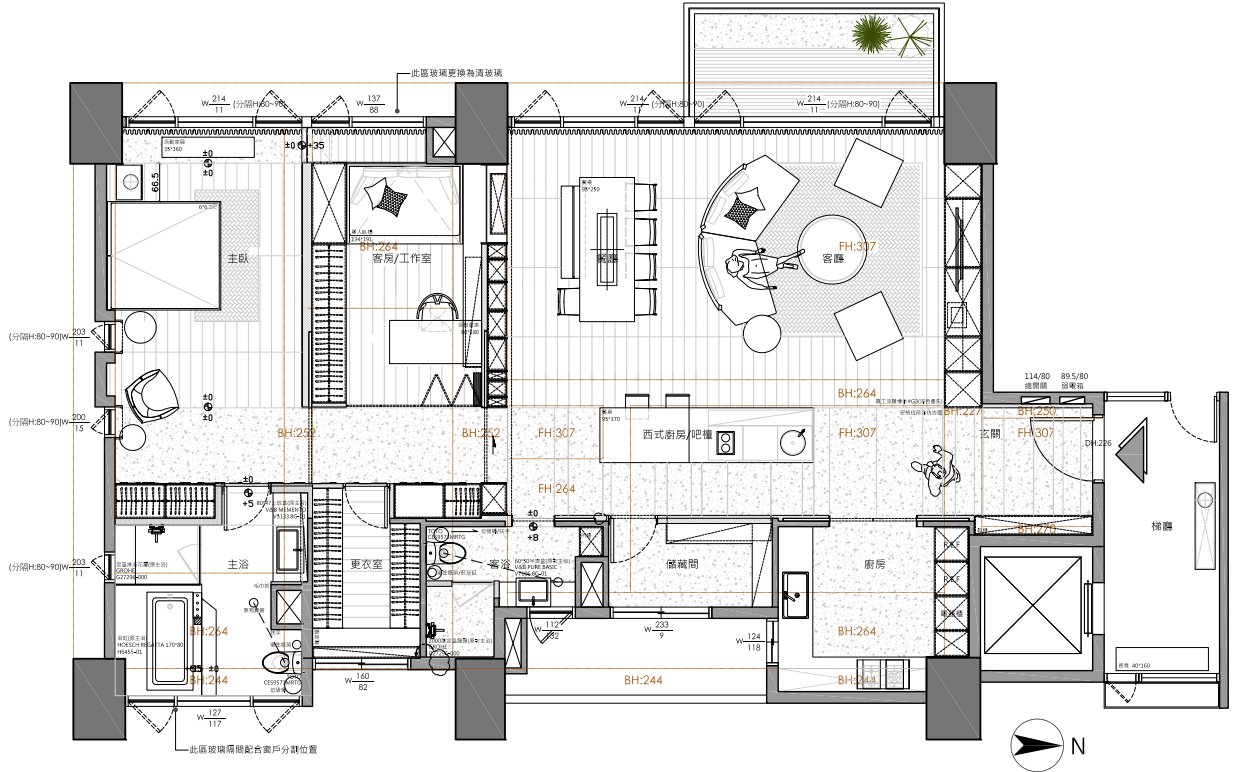


住宅內部空間承載著人生活的型態，也反映了屋主居住的習性經驗，在媒材元素相互融合搭配之下，將其獨特的本質發揮，形塑場域的樣貌，使人身處其中怡然自得。如此，可以確定的是，設計不僅僅是營造了空間的情感，更帶動了細膩的生活體驗。

表現材質獨有的特性是此案設計想法的開端，如果木皮所代表的是溫潤、是柔和，那麼石材即是冷冽和直接。玄關過道以石材鋪陳牆面和地坪，在視覺的傳遞過程中，遊走軸線行徑之間，透過材質與燈光重新界定開放場域的定義與感受；方形幾何分隔的流明天花，到前方黑色檯面再到底端的櫃面，遠近之間有了層次，石材以單一材質的建築手法延伸了空間尺度，藉由地坪不同材質的場域分屬，另一邊空間量體透過自然光的滲透，襯上木質地坪的溫潤，輔以家具、軟件、餐桌、餐椅素材的相對比之下，衍生出空間於人文本質上最直接的溫度感受。在材質轉換之間暗喻了空間量體的界定，將室內的公共及隱私空間再次分為內與外兩區塊；在光影虛實的映照變換之下，使木質的溫潤與石材的冷冽二者質性碰撞得以舒緩，在場域裡各自突顯卻又相互地融合。在沐光潤澤下，材質的拼列、交互，為空間堆疊出了人文與生活的層次。

二種主要元素由公領域遞延至私領域，在白色為基底的空間之中，隨著光線的穿透，隱隱地散發出質優的舒適感，整體以木質、石材、白色、黑色架構出場域的樣貌，隨著線條的傳遞，讓空間在簡潔和人文的語彙中，成就出一個高質感的住宅。

溫潤的木質、冷冽的石材為空間構築起人文場域。





純粹的媒材運用，形塑出空間質感。

The interior space of the house carries people's life style, and reflects the habits of the owner's living experience. Under the mutual integration and collocation of the media elements, its unique essence will be displayed and the appearance of the molding field will make people contented to live in it. Thus, it can be sure that the design is not only to create the sensation of space, but also to lead to a delicate life experience.

Design idea of this case begins with the performance of the unique characteristics of material; if the veneer represents gentle and soft, the stone is cold and direct. The wall and floor of entrance-hall avenue lays the stone, in the process of visual transmission, walking between the axis lines redefine the definition and feeling of the open field through the material and light; lumen smallpox separated by a square shape lays to the front of the black countertops and then to the bottom of the counter, with layers between the distance. The stone extends the spatial scale through a single material architectural means, with different materials of the floor of the field, the space on the other side through the natural light penetration to line with the gentle of wood and accompany with comparison of furniture, software, table, chair material to derive that space is the most direct sense of temperature to the human nature. As the metaphor of the definition of the amount of space in the material conversion,



the interior public and privacy space is divided into inner and outer blocks. With the transformation of light and shade, the collision between warm wood and cold stone comes to ease, respectively highlighting but fusing with each other in the field, where the stitching and interaction of material add layers for the space.

Two main elements defer from the public field to the private field, with the penetration of light, faintly exuding excellent comfort in the space with white as a base, and constructing the overall appearance of field by wood, stone, white and black, with the lines of transmission, so that space can achieve a high-quality residential in the simple and humanistic vocabulary.

